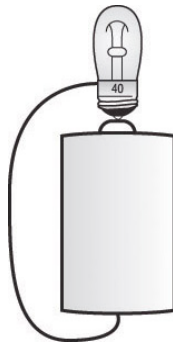


Quiz #2

1. What is the purpose of a switch? _____

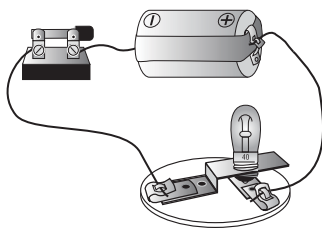
2. The diagram below shows a bulb and wire attached to a battery.



Why would this bulb be lit?

- A. The battery is out of energy.
- B. The circuit is closed or complete.
- C. The bulb is out of energy.
- D. The circuit is opened or incomplete.

3. The diagram below shows a closed circuit.

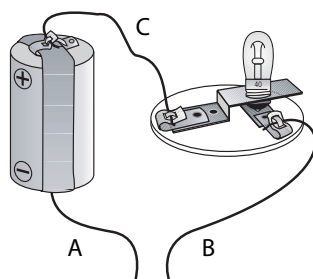


The purpose of the copper wire in the circuit is to

- A. store electricity
- B. produce electricity
- C. conduct electricity
- D. stop the flow of electricity

Copyright 2010 by the Board of Cooperative Educational Services for the Second Supervisory District of Monroe and Orleans Counties, Elementary Science Program. All rights reserved. This publication may only be reproduced for one-time classroom use. No part of this publication may be stored in a retrieval system, or transmitted, in any form or by any means, electronic, mechanical photocopying, recording, or otherwise, without the prior written permission of Monroe 2-Orleans BOCES, Elementary Science Program.

4. The diagram below shows an open or incomplete circuit. It includes a battery, a bulb, and three wires labeled A, B, and C.



The bulb is not lit. What should be done in order to light the bulb and complete the circuit?

- A. Remove wire C.
 - B. Remove the battery.
 - C. Connect wires B and C.
 - D. Connect wires A and B.
5. Give two reasons why a bulb in a circuit might not light.

6. State a rule that should always be followed when connecting more than one battery in a circuit.
